

// R.C. GORMAN: A LIFE REMEMBERED //

Southwest Art

FINE ART OF TODAY'S WEST

CLASSIC
WESTERN
ART

COWGIRLS
IN THE
SPOTLIGHT

LIFE ON
THE RANGE

NATIVE
AMERICAN
SCENES



MARCH 2006

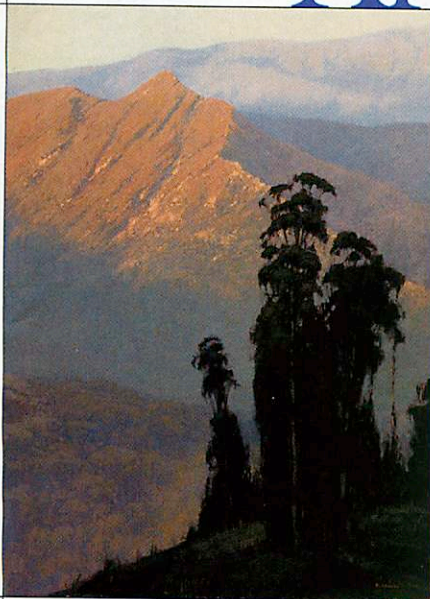
\$5.99US \$7.99CAN

03>



www.southwestart.com

Artists to Watch



Kevin Courter

In 2005, California painter Kevin Courter won top awards at the Carmel Art Festival in Carmel, CA, and at the Telluride Plein Air show in Telluride, CO. His spare compositions and color palettes bring to mind works by early California Impressionists like Maurice Braun. Courter, who lives in the San Francisco area, is fond of capturing environments close to home, including picturesque scenes of Marin County and the Sacramento Valley.

Since beginning to paint landscapes in 1997, Courter says his style has evolved from creating highly detailed renderings to capturing the spirit of a place. "I wasn't having much fun painting at first," he recalls. "Now, when I paint, I want to convey a sense of peace and quietness in my works. It's a beautiful world out there, and I want people to see it."

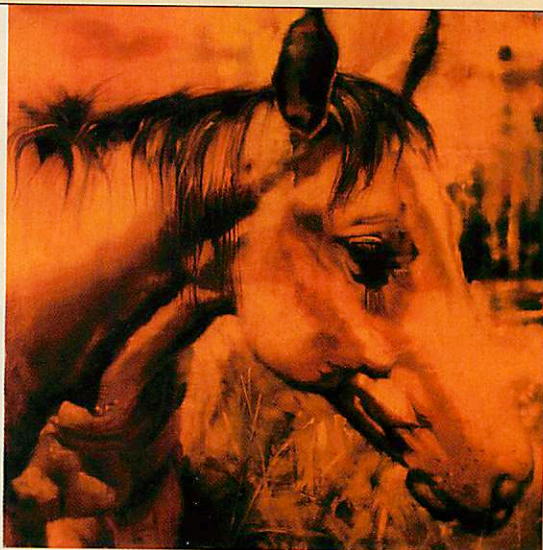
Courter enjoys exploring new locales and brings a tonalist's eye to his paintings, preferring to work within a close range of colors. For inspiration, he turns to the >

MALIBU CANYON BY KEVIN COURTER

Diana Tremaine

Montana artist Diana Tremaine emphasizes that her equine images are about much more than just horses. "Because they've been such a prevalent part of history, it feels to me as though they've witnessed all the worst aspects of mankind, in wars where they've fought for us, and the best of mankind," she explains. "I just feel that they have every emotion recorded in their very being, and it comes out when you look in their eyes. My paintings are about expressing the broader human experience." To convey this idea, Tremaine typically works in a monochromatic palette and crops in close to the horse's head, leaving only one eye visible. This creates an element of mystery, she says, where the viewer can ponder the known versus the unknown.

The artist grew up in New York City and lived in Los Angeles for 14 years before relocating to Montana in 2000. She feels that the environments of her formative years influenced her artistic vision to >



GLOW BY DIANA TREMAINE

Jamie Kirkland

It was through a long, circuitous path that Jamie Kirkland reached her career in fine art. Although she has been drawing since grade school, she did some modeling in New York and owned a restaurant in Florida before moving out West and reconnecting with her artistic roots. Kirkland completed her bachelor's degree in fine art at the University of Utah in 2004 and now resides in Helper, UT. She maintains a studio there in the building where painters David Dornan and Paul Davis conduct workshops.

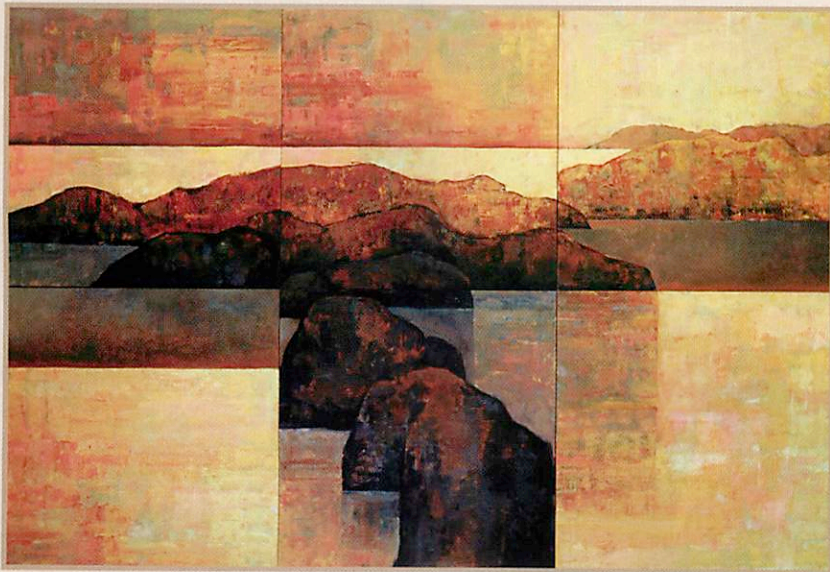
Kirkland's tonal landscapes are a reflection of her love for the West, where the "feeling of space is so immense," she says.

"I find it incredibly soothing and tranquil. My work is primarily about mood and feeling." She enjoys working with color and mixing pigments on canvas—making a move, watching the effect, and reacting accordingly. Music is also a major part of her creative process. "I have this incredible passion going with Van Morrison," she says with a >



DUSK II BY JAMIE KIRKLAND

Proudly Representing
DENNIS HARTLEY



"Rock, Water, Sky: Six Panel" 36" x 55" Oil on Panel



"Luminescent Barn" 45" x 37" Oil on Canvas

selby
Fleetwood
GALLERY

selbyfleetwoodgallery.com 505-992-8877 800-992-6855

600 canyon road santa fe, new mexico 87501

Kevin Courter *continued*

landscape itself—ranging from the grandeur of Yosemite National Park to a small lily pad floating on a pond—and to works by contemporary Montana-based painter Russell Chatham. Courter is represented by Greenhouse Gallery of Fine Art, San Antonio, TX; New Masters Gallery, Carmel, CA; The Garden Gallery, Half Moon Bay, CA; Fraser Fine Art, San Francisco, CA; Firehouse Gallery, Sausalito, CA; and Sekula's Fine Antiques, Sacramento, CA.
—Bonnie Gangelhoff

Diana Tremaine *continued*

lean toward the contemporary side, as in her piece GLOW, which features a horse bathed in bright orange. "I like the juxtaposition between that hot, intense palette and the strong but mellow-looking horse," she says. See her work in a solo exhibition this month at Gallatin River Gallery in Big Sky, MT. Tremaine is also represented by Visions West Gallery, Bozeman and Livingston, MT, and Center Street Gallery, Jackson, WY.
—Julie Osterman

Jamie Kirkland *continued*

laugh. "I also like classical music and opera. It affects the way my brushwork is going and the movements of my body. I like to paint standing up—I feel like a conductor of an orchestra."

A solo show of Kirkland's work opens on March 31 at Winterowd Fine Art in Santa Fe, NM. She is also represented by Phoenix Gallery, Park City, UT; g2 Gallery, Scottsdale, AZ; and Gallery Gora, Montreal, Canada.
—Julie Osterman